

The new low-speed granulators of the G series are the ideal solution in injection and blow-moulding. There are three models with a rotor 200mm in diameter and blades measuring 150-300-450 mm in length.

Its sound-proofed hopper and appropriate protections make it a safe and reliable machine.

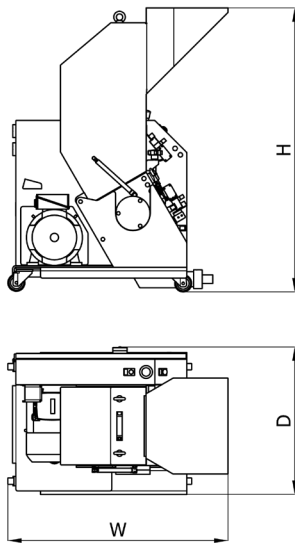


## TECHNICAL CHARACTERISTICS

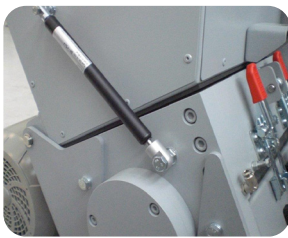
- Rotor made of high-quality steel.
- Fixed and movable blades with a scissor cutting action.
- High-efficiency motors and belt drive with a low number of revolutions and limited powers ensure high throughputs.
- Regrind material is extracted by means of a pneumatic feeder or an extraction screw with collection tank.

## ADDED VALUE:

- **QUALITY**  
Regrind material with a low quantity of dust;
- **LOW NOISE**  
A solid rotor and a sound-proofed hopper ensure noise levels below 80 dB(A).
- **EASY ACCESS**  
No need of tools to access the cutting chamber and its self-dumping hopper with a damped system allows cleaning the granulator in few minutes.
- **SAFETY**  
Operator's safety comes first in compliance with standards UNI EN ISO 12100 and 13849.



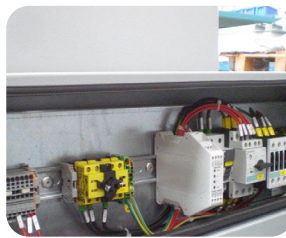
Version with extraction screw



Gas shock absorber



Two safety switches



Safety control unit



Rotor with protection

	Unit of measure	G20/15	G20/30	G20/45
Rotor speed	rpm	200	200	200
Rotating blades	n°	3	3	2/3*
Fixed blades	n°	2	2	2
Rotor diameter	mm	200	200	200
Rotor width	mm	150	300	450
Screen holes	mm	4-5-6-8	4-5-6-8	4-5-6-8
Feed throat	mm	320x150	320x300	320x450
Collection tank capacity	dm <sup>3</sup>	5.5	11	15
Cutting chamber opening	mm	230x150	230x300	230x450
Noise level	dB(A)	<80	<80	<80
Motor power	kW	1.5	3	4
Voltage/Frequency	V/Hz	400/3/50-60	400/3/50-60	400/3/50-60
Production	kg/h	40	60	80
Dimensions WxDxH	mm	1030x540x1330	1030x690x1330	1030x840x1330
Weight	kg	240	300	380